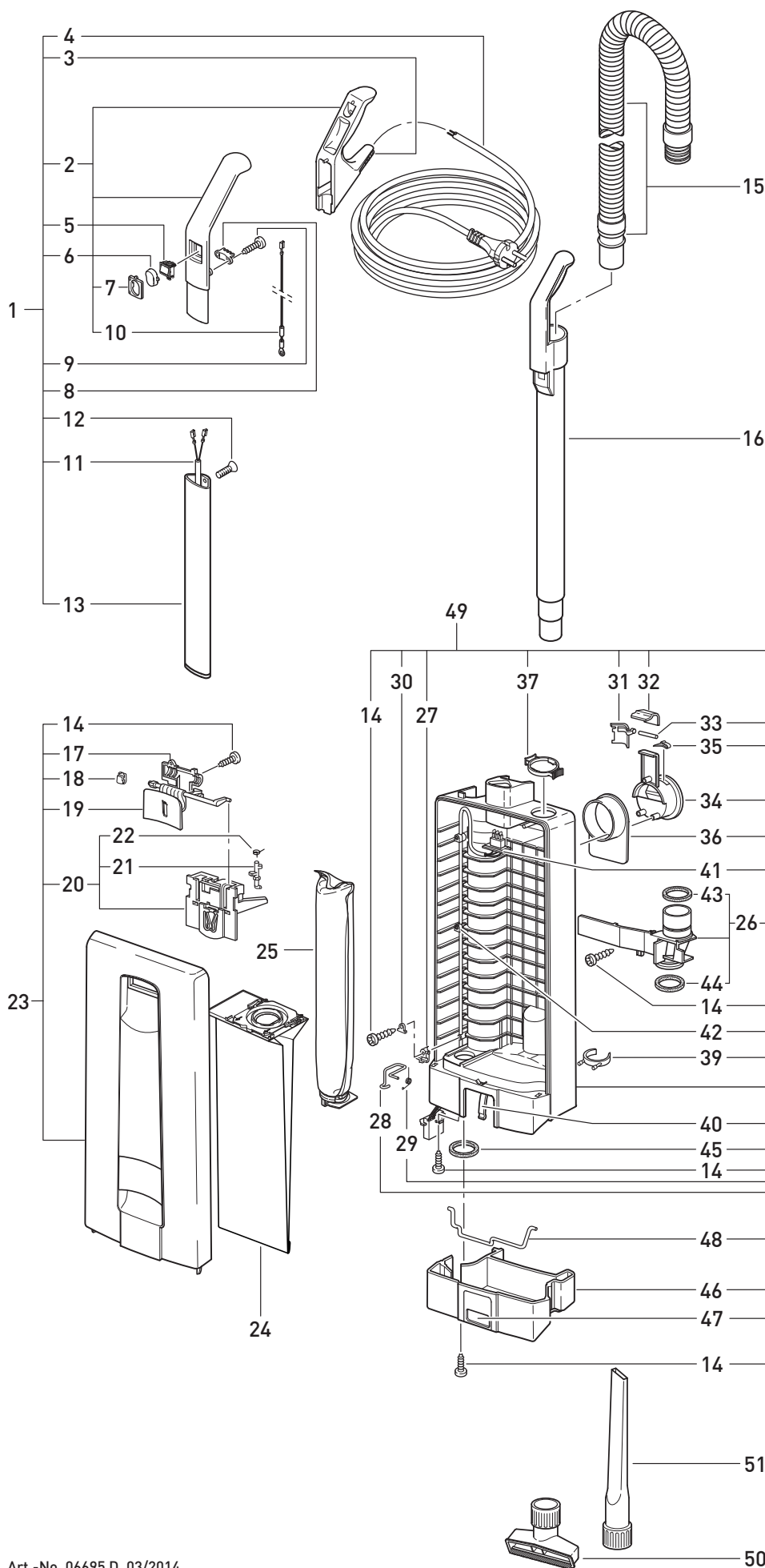


This information intended only for
Europe (230 V / 240 V)
and does not apply to North America !



SEBO PROFESSIONAL G1

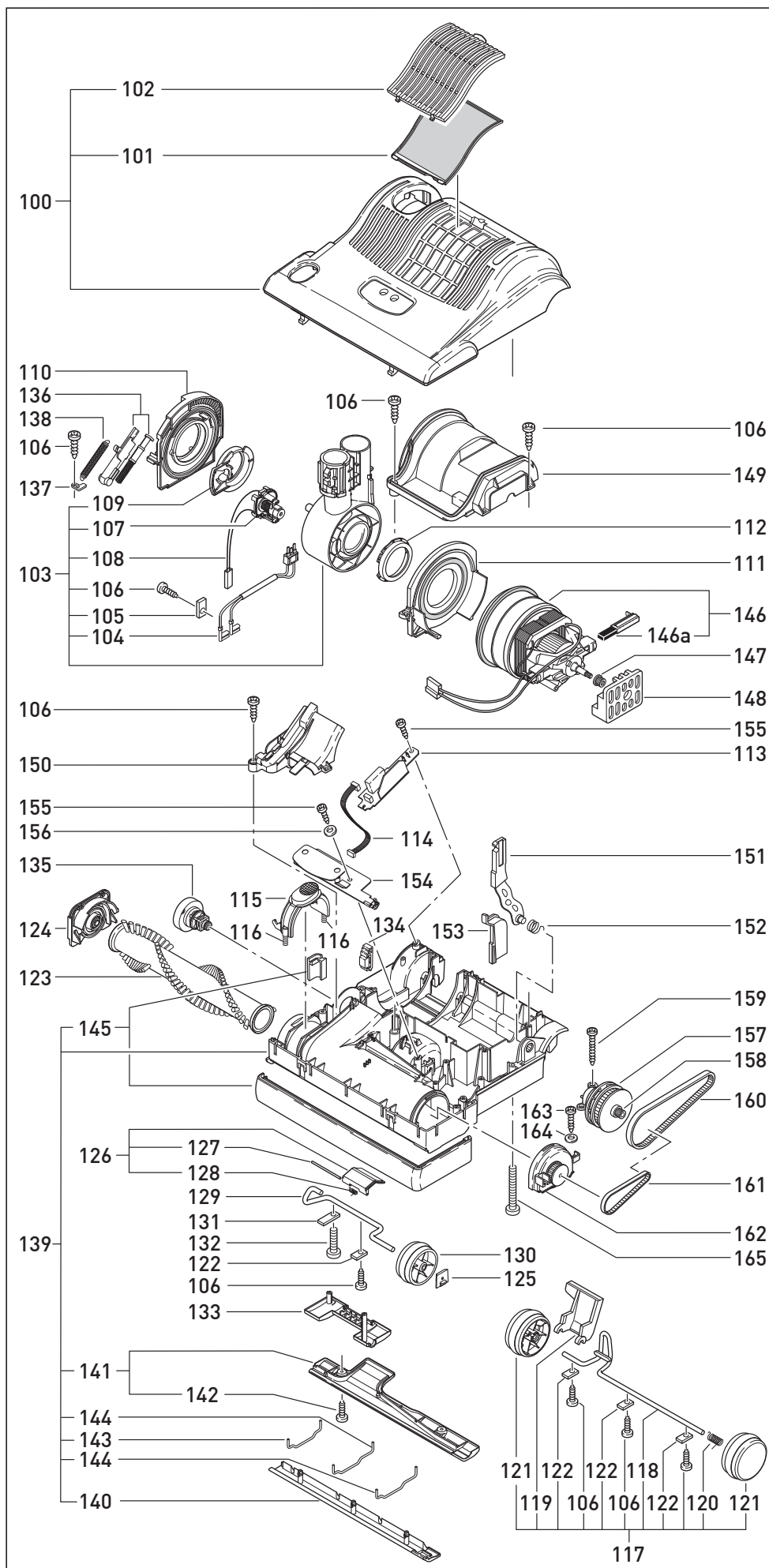


Pos.	Art.-No.	Description (ENG)
1	5628 hg	Handle cpl. with cable 5260 dg
2	5296 ES	Handle grip, compl.
3	5359 HE	Grommet
4	5260 dg	Cable with EU-plug
5	05113	Switch
6	5160 dg	Switch cap
7	5161 hg	Switch cap holder
8	5162	Cable clamp
9	0103 ER	Screw C 3,9x16
10	5253-1	Wire-antistatic
11	5216 ER	Handle cable (230/240V)
12	0129 ER	Screw M 4x12
13	5187	Handle tube X
14	0102 ER	Screw F 3,9x13
15	5040 sb	Hose, compl.
16	5045 hg	Extension tube, compl.
17	5803 hg	Cover
18	5319	Bag holder spring
19	5706 dg	Cover release
20	5324	Bag holder compl.
21	5360	Safety catch
22	5091	Safety catch spring
23	5805 SE	Front cover compl.
24	5093 N	Dust bag Sebo X
25	5036 ER	Micro hygiene filter X
26	5380 HG	Internal cover compl.
27	5164	Cable clamp
28	5208	Filter safety catch
29	5210	Return spring
30	1073	Clamp
31	5099	Handle lock plate
32	5098 hg	Lock catch
33	0187 ER	Lock pin 4x33,5
34	5145 hg	Cable hook
35	5146	Stop spring
36	5144 hg	Cable hook
37	5424 dg	Retaining ring
39	1823 hg	Attachment clip
40	5084	Spring for locking rod
41	5217 ER	Internal cable (230V)
42	5266	Cable clamp
43	5842	Seal 54x44x6
44	5289	Seal
45	5163	Seal
46	5085 hg	Dust bag housing bumper base
47	5082 dg	Dust bag housing locking
48	5083	Locking rod
49	5184 hg	Dust bag housing compl.
50	1491 JE	Upholstery nozzle
51	1092 JE	Crevice nozzle/L-grey

This information intended only for
Europe (230 V / 240 V)
and does not apply to North America !



SEBO PROFESSIONAL G1



Pos.	Art.-No.	Description (ENG)
100	2831 SE	Power head cover, cpl.
101	2846 ER	Exhaust filter G
102	2820 dg	Exhaust filter cover
103	2823 UL	Swivel neck assembly compl.
104	2883	Male contact holder, cpl.
105	2494	Cable clamp
106	0102 ER	Screw F 3,9x13
107	2835	Bypass valve, cpl.
108	0869	Internal cable
109	2825	Swivel neck bearing, r.h.
110	2824	Swivel neck support, r.h.cpl.
111	5479	Swivel neck support, l.h.cpl.
112	5717	Swivel neck bearing, l.h.cpl.
113	2880 ER	PCB 12V power supply
114	0864	Internal cable
115	5713 dg	Brush roller release, right
116	5103	Spring
117	5051 hg	Axle assembly, compl.
118	5053	Axle
119	5059 or	Foot pedal
120	2010	Axle spring
121	5819 hg	Wheel, compl.
122	2014 ER	Axle clamp
123	5010 ER	Brush roller
124	5031 hg	Bearing block r.h.
125	2869 hg	Rubbing plate
126	2868 OR	Access door cpl.
127	5303	Access door axle
128	5304	Access door spring
129	2861	Pile adjustment axle
130	5174 hg	Pile adjustment wheel, compl.
131	2849	Axle clamp
132	01010 ER	Screw AM 4x16
133	2860 hg	Cover
134	2833	Thrust member, compl.
135	2862 hg	Pile adjustment knob
136	2834	Thrust member, compl.
137	2856	Clamp
138	2867	Spring
139	2821 hg	Chassis G1, compl.
140	5411 hg	Front bottom plate G1, compl.
141	2829 hg	Rear bottom plate G1, compl.
142	0197 ER	Screw M4x12 Z1
143	5401	Wire tie
144	5402	Wire tie
145	5005 hg	Bumper, set
146	5470	Vacuum motor cpl, 1000W/230V
146a	05118 S	Carbon brush set
147	5462	Vacuum motor pulley
148	5100	Rubber mounting
149	2826	Vacuum motor cover
150	2839 sw	Cover for air channel
151	5129	Support lever
152	5107-1	Support spring
153	5112 sw	Motor pulley cover
154	2881 ER	Computer controller
155	0107 ER	Screw C 2,9x13
156	0143 ER	Washer 3,2 DIN 125
157	5464	Sensor, compl.
158	5117/1	Sensor pulley
159	0104 ER	Screw C 3,9x25
160	5463	Belt 2MR-310-6
161	5110	Belt 219 3M HTDII-6
162	5766 hg	Bearing block l.h. compl.
163	0103 ER	Screw C 3,9x16
164	0140 ER	Washer 4,3 DIN 125
165	0176 ER	Screw AM 4x30