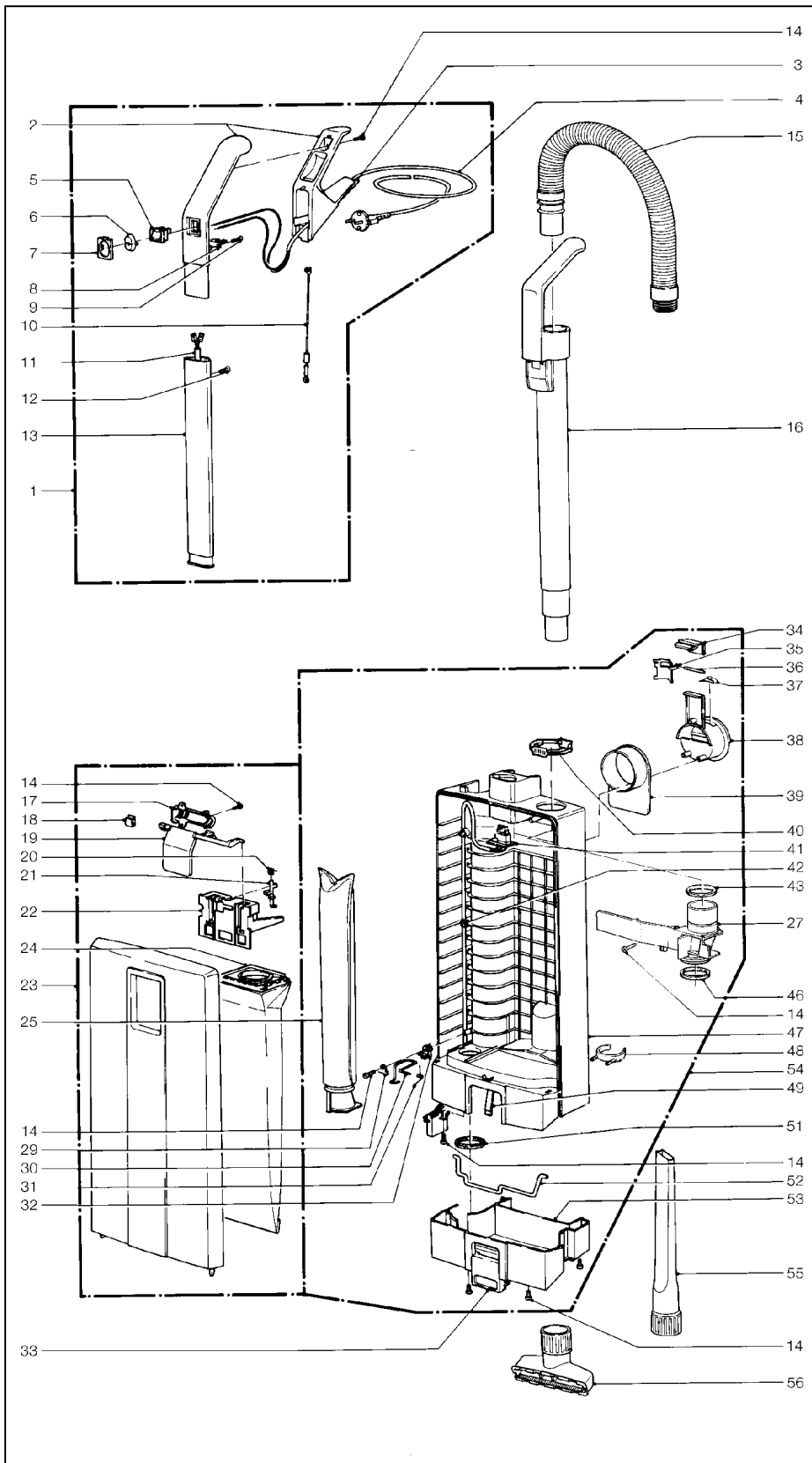


SEBO AUTOMATIC X1

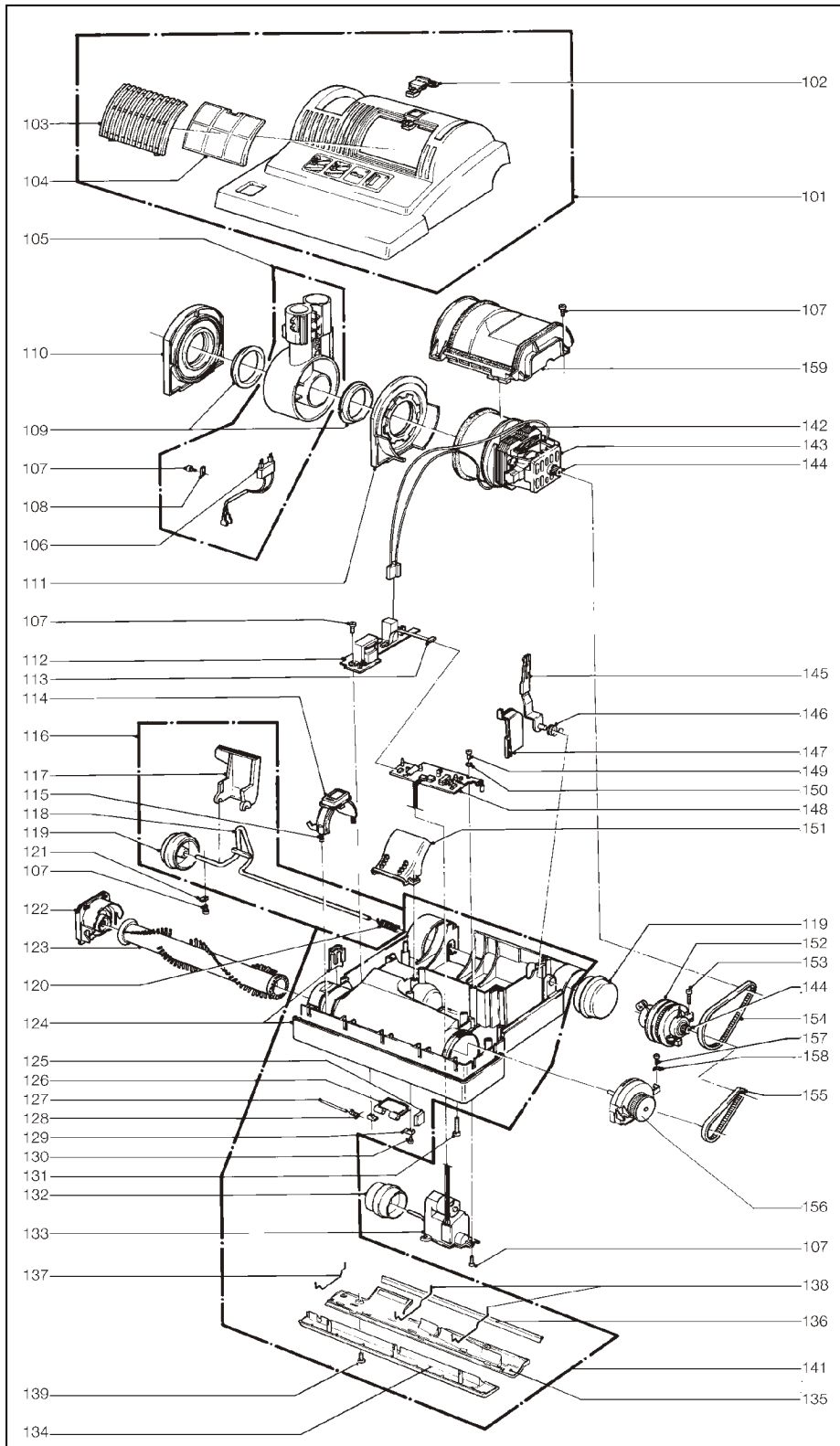
GREY



Pos.	Product Code	Description
1	5621 GB	Handle, cpl. with cable GB plug
2	5296 ES	Handle grip (incl. Pos. 7 + 10)
3	5359 HE	Grommet
4	5461 UK	Cable with GB plug
5	0532 ER	Switch
6	5160 dg	Switch cap, dark grey
7	5161 dg	Switch cap holder
8	5162	Cable clamp
9	0103 ER	Screw C 3,9 x 16 DIN7981
10	5253	Wire-Antistatic
11	5216 ER	Handle cable
12	0129 ER	Screw M4 x 12
13	5187	Handle tube
14	0102 ER	Screw F 3,9 x 13 DIN7981
15	5040 dg	Hose, cpl.
16	5045 dg	Extension tube
17	5307	Cover
18	5319	Bag holder spring
19	5306 dg	Cover release, dark grey
20	5091	Safety catch spring
21	5360	Safety catch
22	5324	Bag holder cpl. (incl. Pos. 20 + 21)
23	5185 hg	Front cover cpl. grey/grey
24	5093ER	Dust bag pack
25	5036 ER	Micro hygiene filter
27	5380 DG	Internal cover, cpl. (incl. Pos. 43 + 46)
29	1073	Clamp
30	5208	Filter safety catch
31	5210	Return spring
32	5164	Cable clamp
33	5082 dg	Dust bag housing lock.,grey
34	5098 hg	Lock catch
35	5099	Handle lock plate
36	0187 ER	Lock pin 4x33,5
37	5146	Stop spring
38	5145 hg	Carrying handle
39	5144 hg	Cable hook
40	5424 dg	Retaining ring
41	5217 ER	Internal cable
42	5266	Cable clamp
43	5842	Seal
46	5289	Seal
47	5279 hg	Dust bag housing
48	1823 hg	Attachment clip
49	5084	Spring for locking rod
51	5163	Seal
52	5083	Locking rod
53	5085 hg	Dust bag housing bumper
54	5184 hg	Dust bag housing cpl.
55	1092 JE	Crevice nozzle
56	1491 JE	Upholstery nozzle

SEBO AUTOMATIC X1

GREY



Pos.	Product Code	Description
101	5183 dg	Power head cover X1
102	5008 dg	Exhaust filter catch
103	5007 dg	Exhaust filter cover/rabs
104	5143	Exhaust filter
105	5175 hg	Swivel neck assembly (incl. Pos. 106)
106	5176	Male contact holder
107	0102 ER	Screw F 3,9 x 13 DIN7981
108	2494	Cable clamp
109	5101	Swivel neck bearing r.h.
110	5178	Swivel neck support r.h.
111	5177	Swivel neck support l.h.
112	5193 ER	PCB 12V power supply
113	5205	Ribbon cable
114	5102 dg	Brush roller release
115	5103	Spring
116	5051 hg	Axle, assembly
117	5059 or	Foot pedal
118	5053	Axle
119	5819 hg	Wheel
120	2010	Axle spring
121	2014 ER	Axle clamp
122	5031 dg	Bearing block right hand
123	5010 ER	Brush roller X1
124	5005 hg	Bumper
125	5155 hg	Rubbing plate
126	5172 HG	Access door (incl. Pos. 127 + 128)
127	5303	Access door axle
128	5304	Access door spring
129	5154 dg	Hinge
130	0100 ER	Screw 2,9 x 9,5 DIN7981
131	0176 ER	Screw M 4 x 30 DIN7985
132	5174 hg	Pile adjustment wheel
133	5060 ER	Servo motor with gear box
134	5411 hg	Front bottom plate X1, cpl.
135	5412 hg	Rear bottom plate X1, cpl. (incl. Pos. 136+139)
136	5400-1	Sealing strip
137	5401	Wire tie
138	5402	Wire tie
139	0197 ER	Screw M4x12 Z 1
141	5320 hg	Chassis X1, cpl.
142	5192	Vacuum motor 850W/230V
	0511/1	Carbon brush set/vac motor
143	5100	Rubber mounting
144	5117	Motor pulley
145	5129	Support lever
146	5107-1	Support spring
147	5112 sw	Motor pulley cover
148	5740 ER	Computer controller 230V
149	0107 ER	Screw C 2,9 x 13
150	0143 ER	Washer 3,2 DIN125
151	5173 sw	Cover for air channel
152	5382	Sensor X1
153	0104 ER	Screw 3,9 x 25 DIN7981
154	5379	Belt 312 3M-HTDII-6
155	5110	Belt 219 3M HTDII-6
156	5766 hg	Bearing block l.h., cpl.
157	0103 ER	Screw 3,9 x 16 DIN7981
158	0141 ER	Locking washer
159	5018UL	Motor cover

06004E - 06.2008

This information intended only for Europe (230 V/240 V) and does not apply to North America!